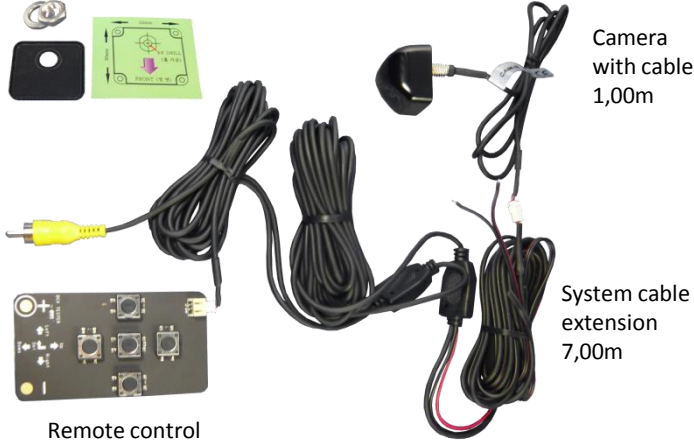


Mini-rear-view camera for horizontal base frame
CAM-N-H130 (black), CAM-N-HS130 (silver), CAM-N-HW130 (white)

Delivery content

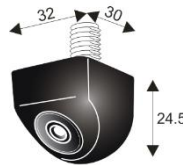
Counter nut,
 adhesive pad,
 mould



Remote control

Product features

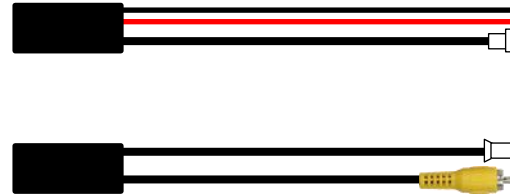
- Mini-camera in metal housing (black/white/silver)
- Cable guided screwed tube 8mm with counter nut
- Horizontal base frame
- Mirrored image, optionally disengageable
- Sensor-type ¼" Sony Super HAD CCD II NTSC colour
- Light sensitivity 0.01 Lux
- Digital filter for noise, optionally disengageable
- Angle H=130°, V=95°, D=165°
- optional guide lines, adjustable in all directions to the car
- IP 68
- Power supply 10V ~ 15V
- Power 100mAh
- Video-connection RCA male connector
- Cable-length 8m
- Dimensions of housing without screwed tube WxDxH 32x30x24mm
- Weight 73g



Installation



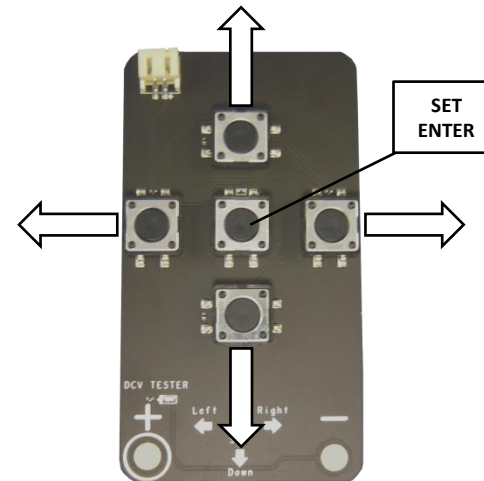
Horizontal base frame



- Ground
- +12V reverse signal
- Camera
- Remote control
- Video-signal

Note: If the camera is powered by reverse signal we recommend to install a relay between power supply of reverse signal and power supply of the camera to ensure a stable and uninterrupted power supply and avoid unwanted errors in the board computer.

Remote control

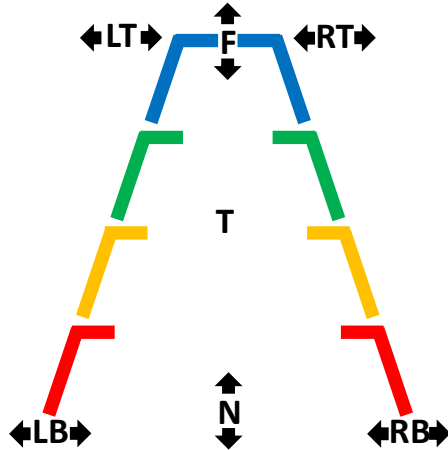


By pressing the SET/ENTER button if camera and remote control are connected the Setup menu will be displayed on the screen:



Adjustment of guide lines

1. Enter Setup menu
2. Select **SPECIAL**
3. Select **PARK.LINE**
4. Adjust guide lines

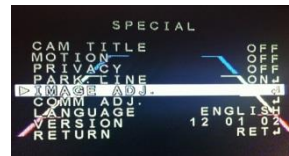


LT	056
LB	010
RT	077
RB	121
F	023
N	053
T	004
RETURN	↵

Adjustment of mirroring

1. Enter Setup menu
2. Select **IMAGE ADJ.**
3. Adjust **MIRROR:**

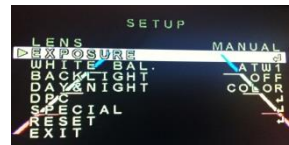
ON = rear-view camera
OFF = front camera



Adjustment of exposure

1. Enter Setup menu
2. Select **EXPOSURE**
3. Adjust **AGC:**

AGC OFF = Off
AGC LOW = Low (standard)
AGC MIDDLE = Medium
AGC High = High



By activation of the **DWDR** function it is possible to get a better picture quality depend on the light situation.

Fading out of light sources in the dark

1. Enter Setup menu
2. Select **BACKLIGHT**

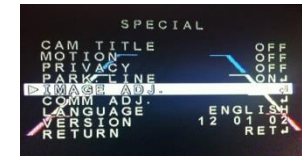


OFF = Fading out off
HLC = Light sources will be shown black in the dark (remaining picture will be light coloured)



Picture settings

1. Enter Setup menu
2. Select **SPECIAL**
3. Select **IMAGE ADJ.**
4. Adjustment of camera picture, e.g. contrast, focus etc.



There are more individual settings of the camera available that are not described in this manual because they are not needed for normal use, e.g.

SPECIAL/PRIVACY – User-specific lines and fields

SPECIAL/MOTION – Motion detection (it is possible to define picture areas that react with movements and the warning notice “Motion Detection” will be displayed)

SPECIAL/CAM TITLE – A text can be displayed, e.g. “back” (position of the camera)

Tip for dealers: Inform your end customers that the rear-view camera mustn't be cleaned by steam cleaner!