

## **TV-Free** Video-in-motion Interface

## **TF-MYGIG**

### **for Chrysler C300 and Dodge and Jeep vehicles with MYGIG navigation systems**

#### **Legal Information**

By law, watching moving pictures while driving is prohibited, the driver must not be distracted. We do not accept any liability for material damage or personal injury resulting, directly or indirectly, from installation or operation of this product. This product should only be used while standing or to display fixed menus or rear-view-camera video when the vehicle is moving, for example the MP3 menu for DVD upgrades.

Changes/updates of the vehicle's software can cause malfunctions of the interface. We offer free software-updates for our interfaces for one year after purchase. To receive a free update, the interface must be sent in at own cost. Labor cost for and other expenses involved with the software-updates will not be refunded.

## Contents

### 1. Prior to installation

- 1.1. Delivery contents
- 1.2. Check compatibility of vehicle and accessories
- 1.3. Setting the Dip-switches of the CAN-Box TV-400
- 1.4. Pin-assignments

### 2. Installation

### 3. Activation of the video-in-motion function

### 4. Specifications

### 5. Technical support

## 1. Prior to installation

Read the manual prior to installation. Technical knowledge is necessary for installation. The place of installation must be free of moisture and away from heat sources.

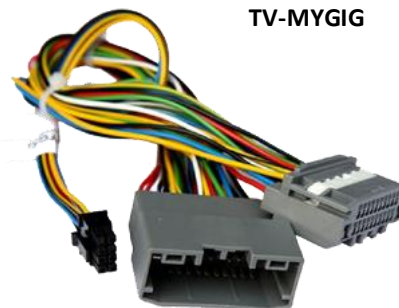
### 1.1. Delivery contents

*Take down the SW-version and HW-version of the interface boxes, and store this manual for support purposes.*

**CAN-box TV-400**  
HW\_\_\_\_\_ SW\_\_\_\_\_



**Harness**  
**TV-MYGIG**



## 1.2. Check compatibility of vehicle and accessories

### Requirements

<i>Vehicle</i>	Chrysler C300, Dodge und Jeep
<i>Navigation</i>	MYGIG and REX (Dodge) navigation systems

## 1.3. Setting the Dip-switches of the Can-Box TV-400

All vehicles Dip 1 ON, Dip 2 OFF, Dip 3 OFF



## 1.4. Pin-assignments

### Pin-assignment vehicle connector

Cable colour	Assignment
○ ● White/Orange	CAN-HIGH - Pin 13
○ White	CAN-LOW - Pin 2
● Red	+12V Permanent - Pin 1
● Black/Green	Ground - Pin 12

### Pin-assignment of the CAN-Box TV-400 (Molex 8pin)

Cable colour	Assignment
● Red	+12Volt Permanent Pin 4
● Black	Ground Pin 8
● Yellow	CAN HIGH Navi Pin 1
● Blue	CAN LOW Navi Pin 2
● ● Yellow/Black	CAN High Vehicle Pin 5
● ● Blue/Black	CAN Low Vehicle Pin 6

## 2. Installation

**Switch off ignition and disconnect the vehicle's battery! If according to factory rules disconnecting the battery has to be avoided, it is usually sufficient to put the vehicle in sleep-mode. In case the sleep-mode does not show success, disconnect the battery with a resistor lead.**

### Instruction for Chrysler C300:

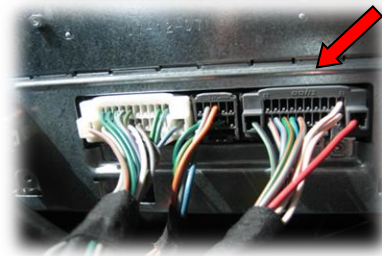
1. Remove the front panel from the centre console, which is attached to multiple clips.



- 
2. Remove the 4 TORX screws and pull the device out of the centre console.



- 
3. Remove the grey female 22pin connector from the rear of the device and connect it to harness TV-MYGIG. Connect the female 22pin connector of harness TV-MYGIG to the device.

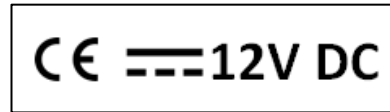


## 3. Activation of the video-in-motion function

The video-in-motion function is activated permanently without disturbing the navigation performance.

## 4. Specifications

Operation voltage	10.5 – 14.8V
Stand-by power drain	>1mA
Operation power drain	~60mA
Power consumption	~0,72W
Temperature range	-30°C bis +80°C
Weight	44g
Measurements (box only) B x H x T	70 x 20 x 47 mm



## 5. Technical Support

**Caraudio-Systems Vertriebs GmbH**  
*manufacturer/distribution*  
Rheinhorststr. 22  
D-67071 Ludwigshafen am Rhein

**NavLinkz GmbH**  
*corporate sales/tech support*  
Eurotec-Ring 45  
D-47445 Moers

phone +49 180 3 907050  
email [support@caraudio-systems.de](mailto:support@caraudio-systems.de)

**Legal disclaimer:** Mentioned company and trademarks, as well as product names/codes are registered trademarks ® of their corresponding legal owners.